



DRUM/BARREL PUMPS ACCESSORIES

Flow Meters

Dispense and batch precise amounts of fluid.
Connects directly to pump.



Part No.	Description	Construction	Applicable Model
U.S. Units - GPM			
Factory Calibrated			
106608	FM-1000, totalizer only	Polypropylene	PFM, PFP
106608-1	FM-1000, rate & totalizer	Polypropylene	PFM, PFP
106608-2	FM-1000, totalizer only	PVDF	PFV
106608-3	FM-1000, rate & totalizer	PVDF	PFV
User Adjustable Calibration			
106609	FM-2000, rate & totalizer	Polypropylene	PFM, PFP
106609-1	FM-2000, rate & totalizer	PVDF	PFV
With Batch Control, - User adjustable calibration			
106609-2	FMBC-2000, rate, totalizer	Polypropylene	PFM, PFP
106609-3	FMBC-2000, rate, totalizer	PVDF	PFV
Metric Units - LPM			
Factory Calibrated			
106608-4	FM-1000, totalizer only	Polypropylene	PFM, PFP
106608-5	FM-1000, rate & totalizer	Polypropylene	PFM, PFP
106608-6	FM-1000, totalizer only	PVDF	PFV
106608-7	FM-1000, rate & totalizer	PVDF	PFV
User Adjustable Calibration			
106609-4	FM-2000, rate & totalizer (no CE)	Polypropylene	PFM, PFP
106609-5	FM-2000, rate & totalizer (no CE)	PVDF	PFV
106734	FM-3000, rate & totalizer (CE & plug type F)	Polypropylene	PFM, PFP
106734-3	FM-3000, rate & totalizer (CE & plug type F)	PVDF	PFV
With Batch Control - User adjustable calibration			
106609-6	FMBC-2000, rate & totalizer (no CE)	Polypropylene	PFM, PFP
106609-7	FMBC-2000, rate & totalizer (no CE)	PVDF	PFV
106734-1	FMBC-3000, rate & totalizer, (CE & plug type F)	Polypropylene	PFM, PFP
106734-2	FMBC-3000, rate & totalizer, (CE & plug type F)	PVDF	PFV

Discharge Tubing



Safely transfers fluid from pump to container

Part No.	Discharge Hose Description	Construction	Applicable Model
M102131	3/4" ID x 1" OD x 5 ft.**	Clear PVC	EP
J103470	3/4" ID x 1" OD x per ft.**	Clear PVC	EP
107435	3/4" ID x 1" OD x 5 ft.†	Reinforced PVC	EF
107440	3/4" ID x 1" OD x per ft.†	Reinforced PVC	EF
M100221	1" ID x 1 5/16" x 5 ft.†	Reinforced PVC	PF
J100302	1" ID x 1 5/16" x per ft.†	Reinforced PVC	PF
M102167	1" ID x 1 1/4" OD x 5 ft. **	Clear PVC	TB, TT
J102785	1" ID x 1 1/4" OD x per ft.**	Clear PVC	TB,TT
J100322	1-1/2" ID x 1 3/4" OD x per ft.**	Clear PVC	BT, HVDP

† Maximum operating temperature: 25°F (-4°C) to 150°F (65°C)

** Maximum operating temperature: -41°F (-41°C) to 140°F (60°C)

Note: Temperatures are based on pumping water.

Static Protection Kit



Increases safety when pumping flammable fluids.

Kit includes synthetic rubber cross-linked polyethylene grounded hose with brass fittings, ground wire, and clamps.

Part No.	Hose Description	Applicable Model
A101521	4 ft. hose with threaded 1" MNPT*	TBS, TTS, PFS
A100835	4 ft. hose with 1" hose barb*	TBS, TTS, PFS
A100836	4 ft. hose with 1 1/2" hose barb*	BT, HVDP
107429	4 ft. with threaded 3/4" MNPT*	EFS
A100961	Wire Assembly	TM

* Maximum temperature: -25°F (-32°C) to 150°F (65°C)

Note: Special lengths are available. Contact Factory.

Note: Temperatures are based on pumping water.

SS Hose Clamp



Secures discharge tubing around pump and fittings.

Part No.	Diameter	Applicable Model
J101756	1/2" - 1-1/4"	EP, EF
J101832	3/4" - 1-3/4"	TB, PF, TT
J100832	1-1/2" - 2-1/4"	BT, HVDP

DRUM/BARREL PUMPS

Nozzles



Safely dispenses and controls fluid filling into containers.

Part No.	Description	Applicable Model
111030-1	1" Barb, SS hose clamp, wetted parts PP & FKM	PF, TB, TT, SF
111030-7	3/4" Barb, SS hose clamp, wetted parts PP & FKM	EF
111030-4	1" Barb, SS hose clamp, wetted parts PVDF & FKM	PF, TB, TT, SF
111030-10	3/4" Barb, SS hose clamp, wetted parts PVDF & FKM	EF
J101929	1" FNPT, wetted parts Aluminum, Brass & PTFE	PFS, TBS, TTS
110374	3/4" FNPT, wetted parts Aluminum, Brass & PTFE	EFS
107232	1" Barb, SS hose clamp, wetted parts SS & FKM	PFS, TBS, TTS
107231	3/4" Barb, SS hose clamp, wetted parts SS & FKM	EFS

See drum pump nozzle tech flyer for more details and options.

Inlet Strainers



Prevents intake of objects or particulates.

Part No.	Construction	Applicable Model
A100855	Polypropylene	PFP
A100111	304 SS	PF, BT
A100337	304 SS	TTS, TBS
A100109	PVC/PE	TTC

Drum Adapters



Polypropylene Galvanized Steel

Keeps pump snug in container bung and limits the escape of fumes.

Fits standard 2" NPT bung opening

Part No.	Construction	Applicable Model
J100366	Polypropylene	EP
107426	304 SS	EFS
107425	Polypropylene	EPF, EFV
M100095	Polypropylene	BT, PF, TM, HVDP
M100088	Galvanized Steel	BT, PF, TM
M100094	304 SS	BT, PF, TM, HVDP
M100090	Polypropylene	TBS, TTS
M100091	Polypropylene	TBP, TTC, SF
M100089	Galvanized Steel	TBS, TTS
M100092	304 SS	TBS, TTS
111374	304 SS	SF

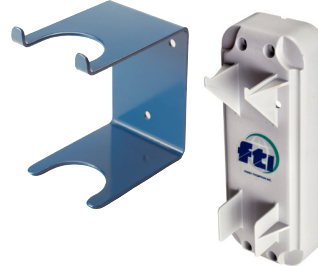
Discharge Spout



Install quick disconnect fittings, flow meters, hard piping or hoses with smaller I.D.

Part No.	Hose Description	Applicable Model
108333	3/4" polypropylene barb fitting	PFM, PFP
108334	3/4" PVDF barb fitting	PFV
108335	1" polypropylene MNPT fitting	PFM, PFP
108336	1" PVDF MNPT fitting	PFV
110194	3/4" polypro MGHT garden hose fitting	PFM, PFP
111367-1	3/4" polypropylene barb fitting	SFM, SFP
111367-2	3/4" PVDF barb fitting	SFV, SFVV
111376-1	1" polypropylene MNPT fitting	SFM, SFP
111376-2	1" PVDF MNPT fitting	SFV, SFVV
111377	3/4" polypro MGHT garden hose fitting	SFM, SFP

Wall Mount Bracket



Stores pump upright on the wall.

Part No.	Applicable Model
M100015	TB, PF, TT, TM
M100740	BT-1, 2, 3 HP
108287	EF
TBD	SF

Chargers



Charges S6 li-ion motor in two hours.

Part No.	Item	Applicable Model
108144	115V charger w/ USA plug	S6
108145	230V charger w/ Euro plug	S6
108286	12V car charger	S6

Filter / Lubricator Assembly & Air Hose



Maintains a clean and oiled air motor for longer life and good operation. Air hose sold separately.

Part No.	Item	Applicable Model
A100003	Filter / Lubricator	M6, M6X, M18, M57, M54, S4
A100221	Filter / Lubricator	M19, M20
A100009	Air Hose	M6, M6X, M18, M57, M54, S4



finishthompson.com

FINISH THOMPSON INC. - HEADQUARTERS

921 Greengarden Road | Erie, PA 16501
800.934.9384 | ph 814.455.4478 | fx 814.455.8518
email fti@finishthompson.com

FINISH THOMPSON INC. - EUROPE CENTER

Otto-Hahn-Strasse 16 | Maintal, D-63477 Germany
49 (0)6181-90878-0 | fx 49 (0)6181-90878-18
email fti@finishthompson.com