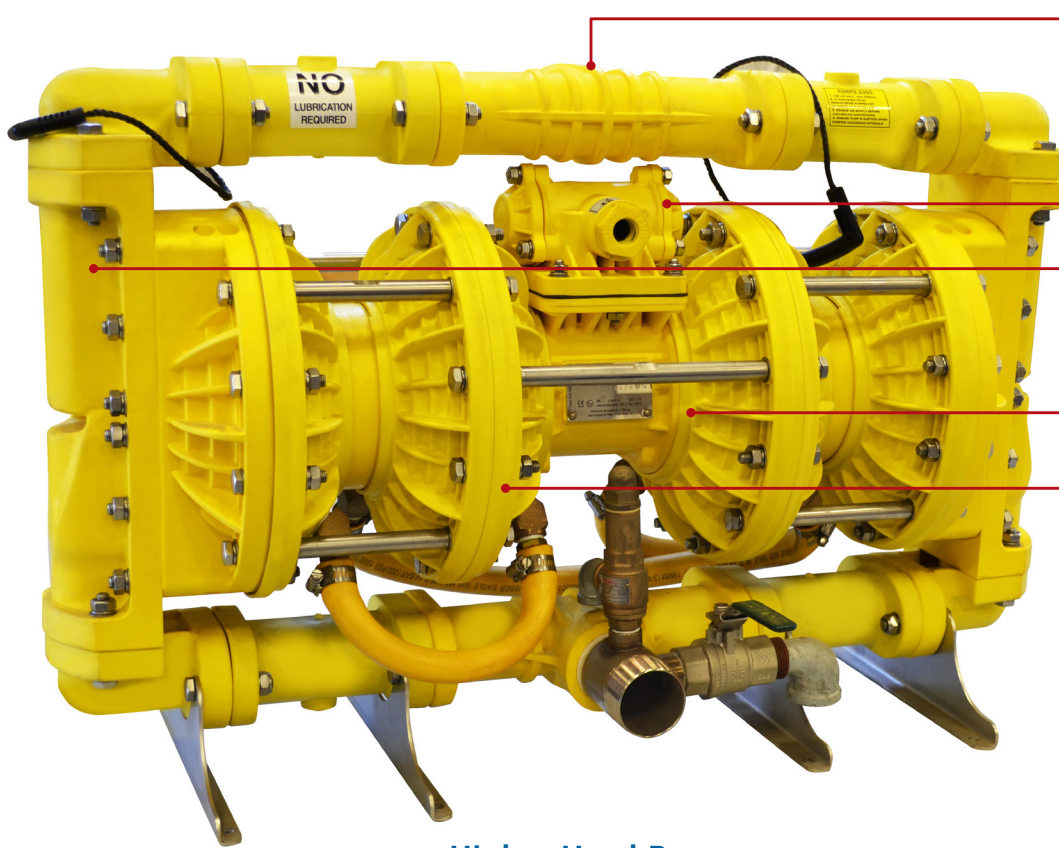


Top Suction



Pass 1.8" / 46mm Solids

Lubrication Free Air Motor

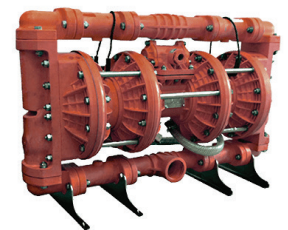
Self-Cleaning Slurry Valve

Unique Main Seal Eliminates
Shaft Replacement

Longer Life Diaphragm

Higher Head Pressure

Yellow Series
General Purpose
Nylon Body- Hytrel Elastomers
ATEX M2 Rating



Red Series - DS50SR
FRAS (Fire Retardant
Antistatic) Nylon Body-
Hytrel Elastomers- For
Explosive Environment-
ATEX M1 Rating

Other materials are available to suit your specific application

Features

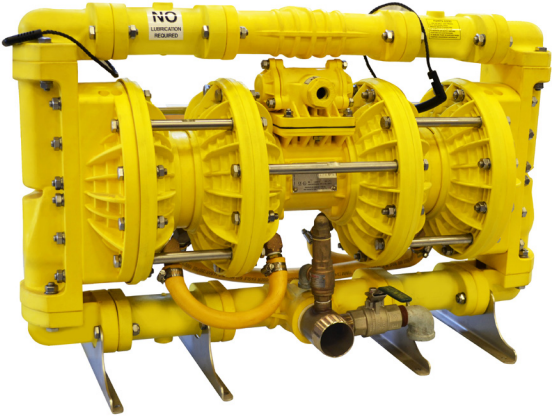
- > Patented design components
- > Simple design with fewer wear parts
- > Large particle handling
- > Low air consumption
- > Lightweight
- > Rugged & impact resistant
- > Lubrication free
- > No end of life – can always be repaired
- > ATEX M1 and M2 certified
- > Low noise levels

Benefits

- > Increased productivity
- > Reduced costs – pays for itself
- > Increased reliability & longer life
- > Less downtime & maintenance
- > Easier to diagnose & repair
- > Save on energy costs –
more air available for other equipment
- > Fewer injuries
- > No pollutants (oil free)
- > Safe for hazardous environments

Pumps 2000" Double Stage Pneumatic Diaphragm Pump

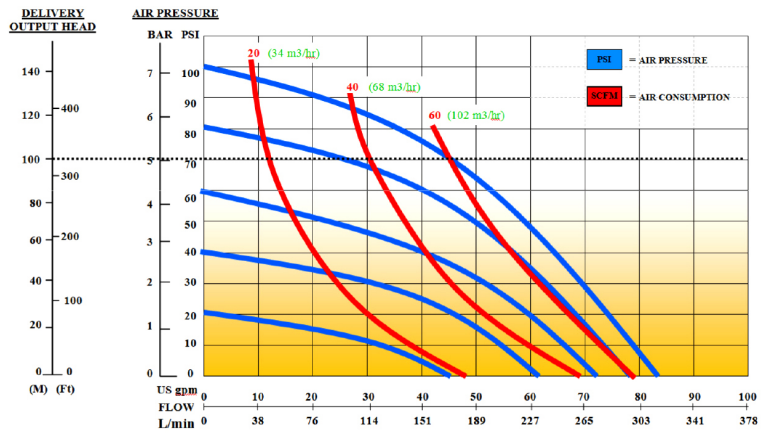
DS50SY - 2" / 50mm Slurry Valve



Slurry Valve

"Pumps 2000" pneumatic diaphragm pumps are specifically designed for harsh mining duties to outperform and outlast the competition due to a number of patented design features. The light weight feature provides ease of mobility and reduces the risk of injury. Low air consumption and long lasting lubrication free parts means low cost running and reduced maintenance. *Suitable for pumping applications in all industries.*

Performance Curve



AIR PRESSURE: Tested at 100 psi / 690 kPa (not to exceed 125 psi / 861 kPa)

FLOW RATE: 0 - 130 gpm / 300 Lpm

FLUID CONNECTION: 2" / 50mm (Internal Thread)

AIR INLET PORT: 1/2" / 15mm (Internal Thread)

EXHAUST PORT: 3/4" / 19mm (Internal Thread)

DELIVERY PRESSURE: Tested to 87 psi / 600 kPa

SUCTION LIFT: Tested to 24' / 7m dry and 30.5' / 9m wet

SOLIDS HANDLING: 1.8" / 46mm

PUMP WEIGHT: Yellow Series – 101 lbs / 45.8kg
Red (FRAS) Series – 1118 lbs / 53.5kg

Pumps 2000 (International)
6-12 Burleigh Street
Toronto 2283
N.S.W., Australia
Tel: +61 2 49599400
Fax: +61 2 49504927
info@pumps2000.com

Pumps 2000 (America)
1721 Main Street
Pittsburgh, PA 15215
Tel: 412.963.9200
1.800.245.6211
Fax: 412.963.9214
info@pumps2000america.com

Pumps 2000 (Europe)
Sunderland
Tyne & Wear, SR1 2NQ
United Kingdom
Tel: +44 (0) 191 5675488
Fax: +44 (0) 191 5678512
info@pumps2000europe.com

